

IIS GALILEO GALILEI (Crema)
CLASS 4MA
EDUCATIONAL TRAVEL (19 APRIL – 22 APRIL 2017)

TRAVEL PLAN: VAL DI NON (Trentino) THE VALLEY OF APPLES, BEARS AND CANYONS



IIS GALILEO GALILEI (Crema)

CLASS 4MA

EDUCATIONAL TRAVEL (19 APRIL – 22 APRIL 2017)

PLACE OF RESIDENCE DURING THE EDUCATIONAL TRAVEL

HOTEL REFUGE SORES (Tres – Trento)



The **Hotel Refuge Sores** is located on Predaia plateau at about 1200 m above sea level, surrounded by beautiful trees and mountains.

IIS GALILEO GALILEI (Crema)
CLASS 4MA
EDUCATIONAL TRAVEL (19 APRIL – 22 APRIL 2017)
FIRST DAY OF THE EDUCATIONAL TRAVEL
BELVEDERE FORTRESS (Lavarone – Trento)



The Austro-Hungarian fortress stands on a rocky spur at an altitude of 1717 meters above sea level.
The Belvedere fort belongs to the great system of Austrian fortifications of World War I built along the Italian border.

IIS GALILEO GALILEI (Crema)
CLASS 4MA
EDUCATIONAL TRAVEL (19 APRIL – 22 APRIL 2017)
FIRST DAY OF THE EDUCATIONAL TRAVEL
BELVEDERE FORTRESS (Lavarone – Trento)



Group photo shot.

IIS GALILEO GALILEI (Crema)
CLASS 4MA
EDUCATIONAL TRAVEL (19 APRIL – 22 APRIL 2017)
FIRST DAY OF THE EDUCATIONAL TRAVEL
PADRE KINO MUSEUM (Segno – Trento)



Eusebio Francesco Chini "Padre Kino" is recognized as one of the "founding fathers of Arizona State". He instituted more than twenty missions between northwestern Mexico and the southwestern United States. Padre Kino has shown remarkable capacity to create a dignified relationship between indigenous people and the religious institution he represented.

IIS GALILEO GALILEI (Crema)
CLASS 4MA
EDUCATIONAL TRAVEL (19 APRIL – 22 APRIL 2017)
FIRST DAY OF THE EDUCATIONAL TRAVEL
PADRE KINO MUSEUM (Segno – Trento)



Group photo shot.

IIS GALILEO GALILEI (Crema)
CLASS 4MA
EDUCATIONAL TRAVEL (19 APRIL – 22 APRIL 2017)
FIRST DAY OF THE EDUCATIONAL TRAVEL
MONDO MELINDA (Segno – Trento)



The crops of apple trees is one of the main business activities of Val di Non.
The visitor center of the Consortium Melinda “Mondo Melinda” was founded in 1997.
With a guided tour you can know all the information about apples and the methods for their crops and processing.

IIS GALILEO GALILEI (Crema)
CLASS 4MA
EDUCATIONAL TRAVEL (19 APRIL – 22 APRIL 2017)
SECOND DAY OF THE EDUCATIONAL TRAVEL
ON THE WAY TO SANCTUARY OF SAINT ROMEDIO (Coredo – Trento)



Group photo shot.

IIS GALILEO GALILEI (Crema)
CLASS 4MA
EDUCATIONAL TRAVEL (19 APRIL – 22 APRIL 2017)
SECOND DAY OF THE EDUCATIONAL TRAVEL
SANCTUARY OF SAINT ROMEDIO (Coredò – Trento)



The sanctuary of Saint Romedio consists of five small overlapping churches, all built on a rock spur and joined together by a long staircase of 131 steps.

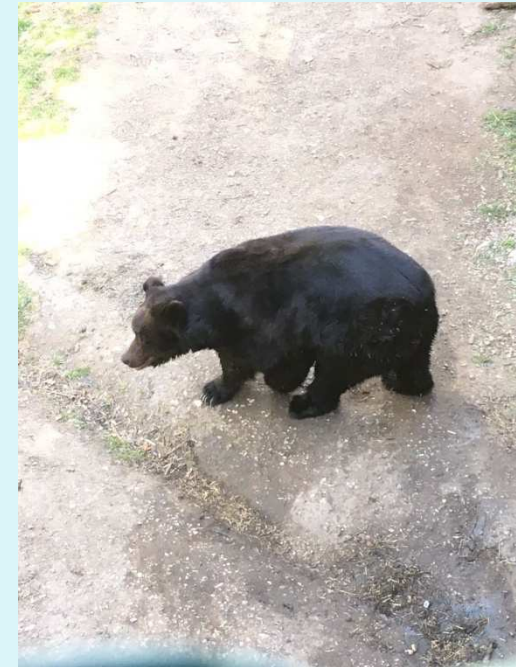
IIS GALILEO GALILEI (Crema)

CLASS 4MA

EDUCATIONAL TRAVEL (19 APRIL – 22 APRIL 2017)

SECOND DAY OF THE EDUCATIONAL TRAVEL

SANCTUARY OF SAINT ROMEDIO (Coredo – Trento)



According to the legend, Saint Romedio lived as a hermit for many years and the legend says that he tamed a bear and rode it as a horse.

IIS GALILEO GALILEI (Crema)
CLASS 4MA
EDUCATIONAL TRAVEL (19 APRIL – 22 APRIL 2017)
SECOND DAY OF THE EDUCATIONAL TRAVEL
HYDROELECTRIC POWER PLANT OF SAINT GIUSTINA (Taio – Trento)



The hydroelectric plant uses the waters of the Noce Creek.

Saint Giustina Dam, built in 1951, with its 152 m height at the time was one of the European tallest barriers.

IIS GALILEO GALILEI (Crema)
CLASS 4MA
EDUCATIONAL TRAVEL (19 APRIL – 22 APRIL 2017)
SECOND DAY OF THE EDUCATIONAL TRAVEL
HYDROELECTRIC POWER PLANT OF SAINT GIUSTINA (Taio – Trento)



The machine room of the hydroelectric plant is located in a cave and can be reached through a long tunnel.

The machine room is equipped with three 30 Mega Watt units.

IIS GALILEO GALILEI (Crema)
4MA
EDUCATIONAL TRAVEL (19 APRIL – 22 APRIL 2017)
THIRD DAY OF THE EDUCATIONAL TRAVEL
DALMEC (Cles – Trento)



Dalmeccan is an important firm that produces industrial manipulators famous and required all over the world.

IIS GALILEO GALILEI (Crema)
4MA
EDUCATIONAL TRAVEL (19 APRIL – 22 APRIL 2017)
THIRD DAY OF THE EDUCATIONAL TRAVEL
DALMEC INDUSTRIAL MANIPULATORS (Cles – Trento)



Dalmeccan industrial manipulators are designed and manufactured according to the specific requirements of each individual client.

.

IIS GALILEO GALILEI (Crema)
CLASS 4MA
EDUCATIONAL TRAVEL (19 APRIL – 22 APRIL 2017)
THIRD DAY OF THE EDUCATIONAL TRAVEL
CANYON RIO SASS (Fondo – Trento)



Since 2001 walkways and staircases in this deep canyon have allowed people to go to the discovery of waterfalls, fossils, stalactites and stalagmites.

IIS GALILEO GALILEI (Crema)
CLASS 4MA
EDUCATIONAL TRAVEL (19 APRIL – 22 APRIL 2017)
THIRD DAY OF THE EDUCATIONAL TRAVEL
SMERALDO LAKE (Fondo – Trento)



It is an artificial lake obtained in 1965, surrounded by wonderful green mountains.

The lake has an area of 10 thousand square meters.

IIS GALILEO GALILEI (Crema)

CLASS 4MA

EDUCATIONAL TRAVEL (19 APRIL – 22 APRIL 2017)

FOURTH DAY OF THE EDUCATIONAL TRAVEL

MUSEUM OF POPULAR AND FOLK COSTUMES FROM THE WORLD (Coredo – Trento)



For over ten years the International Folk Festival was organized in Coredo. Every year the international groups participating to the Festival gave one of their costumes to the Museum, together with ornaments, musical instruments and characteristic objects of the cultures represented.

IIS GALILEO GALILEI (Crema)
CLASS 4MA
EDUCATIONAL TRAVEL (19 APRIL – 22 APRIL 2017)
FOURTH DAY OF THE EDUCATIONAL TRAVEL
CITADEL OF WINE – ROTARI WINERY (Mezzocorona – Trento)



The Citadel of Wine was completed in August 2004, more than 13 million bottles are bottled every year.

IIS GALILEO GALILEI (Crema)
CLASS 4MA
EDUCATIONAL TRAVEL (19 APRIL – 22 APRIL 2017)



Finally, a warm thanks to the teachers who have had the courage to bring the wild bunch in this trip.